

# Corporate Profile



## Meiji Holdings Co., Ltd.

2-4-16, Kyobashi, Chuo-ku, Tokyo 104-0031, Japan  
<https://www.meiji.com/global>



## Meiji Co., Ltd.

2-2-1, Kyobashi, Chuo-ku, Tokyo 104-8306, Japan  
<https://www.meiji.com/global>



## Meiji Seika Pharma Co., Ltd.

2-4-16, Kyobashi, Chuo-ku, Tokyo 104-8002, Japan  
<https://www.meiji.com/global>



# Realizing a Better Future for People, Society and the Earth.

The Meiji Group has remained successful for over a century thanks to being loved and nurtured by many. We intend to apply the skills and knowledge we have accumulated in terms of food and pharmaceutical products to ensure a sustainable future for people, society, and the earth. We have recently embarked on a new challenge in the field of "health." As a corporate group handling food and pharmaceutical products, under the group slogan, "Now ideas for wellness," we will strive to provide "Meiji's unique value for wellness" and contribute to resolving issues.



Now ideas for wellness  
**meiji**

## Group Philosophy

Our mission is to widen the world of "Tastiness and Enjoyment" and meet all expectations regarding "Health and Reassurance."

Our wish is to be closely in tune with our customers' feelings and to always be there to brighten their daily lives.

Our responsibility as "Food and Health" professionals is to continue finding innovative ways to meet our customers' needs, today and tomorrow.



**Why take on the challenge of wellness?**

REASON 01

**We have been supporting the health of people and society for over a century under a philosophy of "Nourishment of Society."**

Ever since our foundation over a century ago, improving the health of people and society has been at the core of our business under a spirit of "contributing to the country through nutrition." We will continue to create "Meiji's unique value for wellness," and sustain our growth.



REASON 02

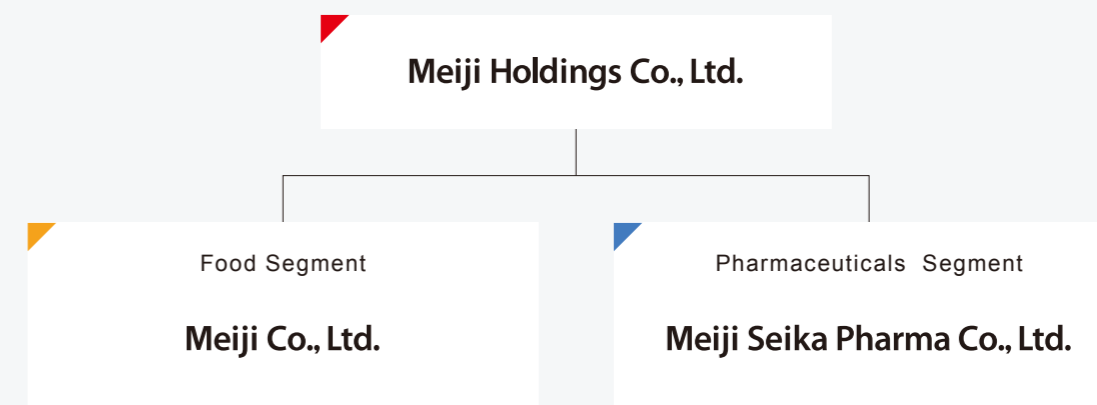
**The Meiji Group fosters healthy lives by providing food and pharmaceutical products.**

We create wellness value to foster well-being for all age groups by utilizing the know-how accumulated across the development of a wide range of products, ranging from dairy and confectionery to nutritional supplements and pharmaceuticals.



**Group Composition**

Meiji Holdings Co., Ltd. is a pure holding company established through the managerial integration of Meiji Seika and Meiji Dairies in 2009. It is comprised of Meiji Co., Ltd., which handles the food business, and Meiji Seika Pharma Co., Ltd. which handles the pharmaceutical business.

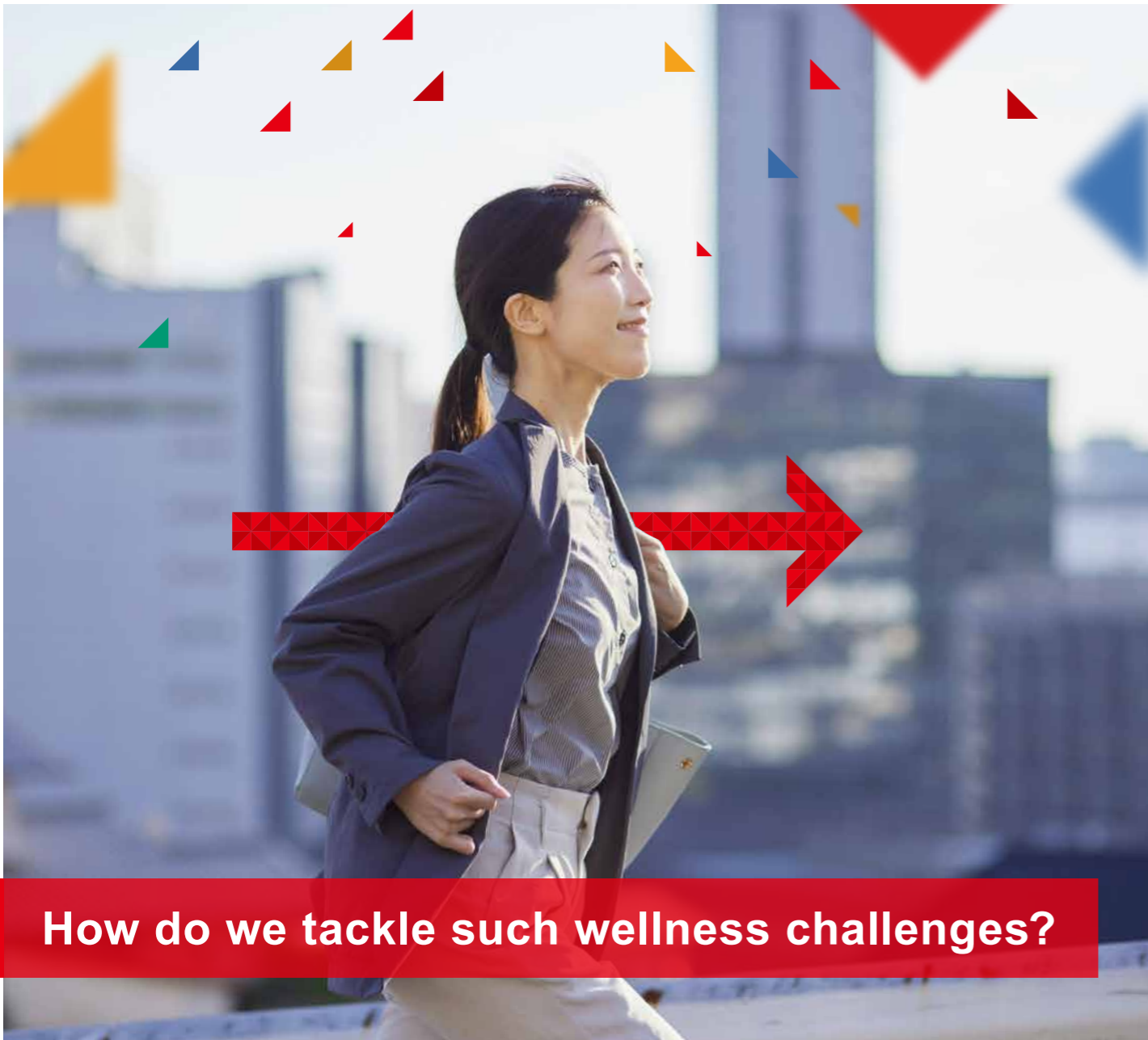


REASON 03

**We aim to utilize our accumulated know-how to continue contributing now and in the future.**

We share our wealth of expertise as Food and Health professionals, and are always searching for new possibilities through innovation. We will continue to build on our expertise in the food and pharmaceutical areas for our health both now and in the future.





## How do we tackle such wellness challenges?

**We strive to create new value through the technological assets we have accumulated coupled with open innovation.**

The Meiji Group carries out open innovation while proactively adopting external ideas and technologies coupled with the strength and technological assets of our food and pharmaceutical businesses.

The Wellness Science Labs at the core of the Meiji Group's R&D promote collaboration with universities and research institutes, and cooperation with and investment in startups and venture companies both within and outside Japan. This approach accelerates technological development while realizing the establishment of a new and unique technology platform. We will leverage ourselves to create new businesses and generate new value with truly global potential.



## The Meiji Group 2026 Vision

We created the Meiji Group 2026 Vision as a strategy to maximize the strengths of the Meiji Group to grow further. We will follow through with this business plan and achieve the Vision successfully. Accordingly, we will improve our medium- and long-term corporate value.

## 2026 The Meiji Group 2026 Vision

### Our Promise and Commitment for the 2026 Vision

The Meiji Group will combine the strengths we have cultivated over the past 100 years with the latest technology and new findings. Thus we will create innovative ways to meet our customers' needs through Food and Health for sustainable growth in Japan and around the world.

#### Key Strategies

- 1 Secure an overwhelming advantage in core businesses
- 2 Establish growth foundation in overseas markets
- 3 New challenges in the health value domain
- 4 Social contributions

#### Numeric Goals

**2024**  
3rd stage

Operating income growth rate	Overseas sales ratio	ROE
Mid to high	Target at	Maintain
<b>single</b> -digit (CAGR)	<b>20%</b>	<b>10%</b> or more

## 2026 Medium-term Business Plan

#### Concept

**Innovate across former "markets, businesses, and actions" to respond to stakeholders' expectations**

- Growth markets are overseas
- Fusion of sustainability and business
- Transformation of human resources and organization

#### Management Goals

#### Evolution of Meiji ROESG® management

Create values that link sustainability (contributing to resolving social issues) with business and financial values

$$\text{Meiji ROESG}^{\circledR} = \text{ROE} \times \text{ESG}$$

#### Improvement of corporate value

Indicators measuring medium- and long-term growth in corporate value.

Total market value, brand value, employee engagement, innovation

**2018**  
1st Stage

"Tackling Ongoing Strategic Issues" and "New Challenges for Growth"

\*ROESG is a management indicator developed and trademarked by Prof. Kunio Ito of Hitotsubashi University.



For further details



What business areas are we tackling?

## FOOD SEGMENT

Meiji Co., Ltd.

**We contribute to the healthy dietary habits of customers of all ages as Food and Health professionals.**

Ever since our establishment, Meiji has been enhancing Tastiness and Enjoyment while striving to meet expectations regarding Health and Reassurance based on our desire to contribute to society through nutrition. We will continue to focus on nutrition to contribute to creating a future in which everyone in the world, regardless of age, can live healthy and happy lives.

### New value creation unique to Meiji

We continue to find innovative ways to meet our customers' nutritional needs so as to contribute to their healthy dietary habits based on "Safety and Reassurance," "Tastiness and Enjoyment," and "Health and Nutrition."



### Commitment to quality

We strive to meet customers' expectations by focusing on quality across all departments, including new product development, raw material procurement, plant sanitary and quality control, product delivery, and communication with customers.



### Communication with customers

Our Customer Service Center and counseling office for mothers with infants respond to a variety of customer questions and consultations regarding child raising. Also, we communicate with customers through fun interactive classes for all generations from children to seniors, and plant study tours.



## PHARMACEUTICALS SEGMENT

Meiji Seika Pharma Co., Ltd.

**Global provision of pharmaceutical products to support public health from prevention to treatment.**

We have been enhancing our lineup from vaccine-based prevention to treatments with antibacterial drugs as a leading company in the field of infectious diseases. We help address public health-related social issues by working tirelessly to combat emerging and re-emerging infectious diseases, address antimicrobial resistance (AMR), ensure a stable supply of pharmaceuticals and vaccines, and provide environmentally friendly veterinary products.

### Research and Development

We strive to grow the company centered on brand-name drugs and human vaccines by applying new knowledge and technologies, and conduct research into generic drugs and veterinary drugs. We aim to deliver brand-name drugs as quickly as possible by preparing an efficient R&D system.



### High quality production

From the procurement of bulk drugs and raw materials to manufacturing, packaging, and shipping, production is carried out under a strict GMP-based quality control system\*. The overall supply chain is centrally managed, and a system that ensures stable supply has been prepared.

\*Good Manufacturing Practice are standards governing the production and quality control of pharmaceuticals.



### Reliability and quality assurance

Reassuring products are delivered by collecting information on manufacturing and quality control, including raw material procurement, and promoting reliability assurance activities to provide information for proper use.



## Food Segment Business Details

### Yogurt / Milk

We contribute to healthy dietary habits by developing products that utilize our unique manufacturing method strengths in lactic acid bacteria and milk.



### Nutrition

We offer products that benefit the health and nutrition of people of all ages, from infants to the elderly, and athletes.



### Overseas

We offer "Meiji unique value for wellness" throughout the world by supplying high quality food that utilizes the technologies and experience accumulated in Japan.



### Chocolate / Gummy Candy

A product line-up that makes full use of our ideas and marketing capabilities, centered on the wonderful ingredient of cocoa.



### Frozen / Cheese / Prepared Food / Food for Professional Use

The line-up features products offered at three temperature levels (room, chilled and frozen), while dairy and cocoa ingredients are also supplied to the restaurant industry.



## Pharmaceuticals Segment Business Details

### Antibacterial Drugs (infectious disease area)

We have established a leading position in systemic antibacterial drugs through our range of products covering each class of antibiotics.



### CNS Disorders

While providing an extensive lineup of therapeutic drugs for depression and schizophrenia, we remain committed to providing appropriate information.



### Generic Drugs

We provide generic drugs centered on infectious disease and CNS disorders.



### Animal Health

We lead the animal health industry with antibacterial drugs and vaccines, and are promoting a global expansion of business.



### Vaccines (infectious disease area)

We develop and supply vaccines for COVID-19 and influenza, etc.



### Immune Inflammatory Area

We also focus on hematological oncology areas, which are closely linked to infectious diseases.



### Blood Plasma Products

Contributing to the treatment of congenital disorders and serious diseases by refining active ingredients from donated blood.



### Contract Manufacturing Organization (CMO) / Contract Development and Manufacturing Organization (CDMO)

Meeting globally expanding CMO demand for pharmaceuticals based on local subsidiaries in Asia.

## TOPICS



Realizing Ideas

"meiji IDEA CASE" is a new business creation initiative by Meiji to convert small ideas that pop up in daily life into innovative products and services. By taking advantage of Meiji's wealth of ideas and ability to effectuate them, we will collaborate with a range of companies and local governments to create a new approach to health. We seek to further contribute to society through this initiative by providing attractive health solutions that people naturally develop an interest in.



For further details (Japanese only)

IDEA CASE #001  
FRESH CHEESE  
STUDIO

The joy of freshness.



IDEA CASE #002  
Inner Garden



IDEA CASE #003  
Fermentation  
Solution



## TOPICS

### Domestic manufacturing of penicillin API

We have been developing an inactivated vaccine (KD414) utilizing our extensive vaccine development-related knowhow and in collaboration with national research institutes since May 2020. Nevertheless, in recent years in Japan, these antibacterial drugs have sometimes run out-of-stock due to unstable procurement of the raw materials, leading to a growing sense of crisis among medical professionals. In order to resolve concerns related to supply, Meiji Seika Pharma, which is a leading provider in the penicillin-based antibacterial drug market, applied to join the Ministry of Health, Labour and Welfare's "Project to support the stable supply of pharmaceutical products." Upon acceptance, we began to manufacture the active pharmaceutical ingredient (API) of penicillin for the first time in 30 years at our Gifu Plant.





What are our future challenges?

# SUSTAINABILITY

Designing a future where everyone around the world is happy and healthy.

The Meiji Group Sustainability 2026 Vision is broken down into three themes: Healthier Lives, Caring for the Earth, and Thriving Communities, plus the shared theme: Sustainable Sourcing; sets out to identify and define material issues and Key Performance Indicators (KPIs), and promote specific sustainability activities while addressing social issues. Our aim is to "realize a sustainable society" in which everyone lives in good health and security by contributing to resolving social issues through our business as Food and Health professionals.



## Healthier Lives

### COVID-19 countermeasures

Since May 2020, we have been utilizing our extensive vaccine development-related knowhow in collaboration with national research institutes\* to develop an inactivated vaccine (KD-414) to protect against the novel coronavirus infection (COVID-19). We also acquired approval for the manufacturing and sales in Japan of *KOSTAIVE*, a self-amplifying mRNA (sa-mRNA) vaccine against COVID-19, in November 2023, and have been supplying this vaccine since the autumn of 2024.

\*National Institute of Infectious Diseases, The Institute of Medical Science, The University of Tokyo, and National Institute of Biomedical Innovation, Health and Nutrition



## Healthier Lives

### Meiji Nutrition Profiling System (NPS) to evaluate the nutritional value of food

Our Nutrition Profiling System provides a way to evaluate the nutritional value of food by scientifically scoring the quantity of nutrients contained in various foodstuffs. The Meiji NPS aims to evaluate nutritional value as it relates to different health issues per age group and region. In 2023, we developed Meiji NPS for adults and older adults, and in 2025, Meiji NPS for younger and older children. We will use Meiji NPS to develop and improve products with higher nutritional values, and also promote measures to provide information to customers in each life stage.

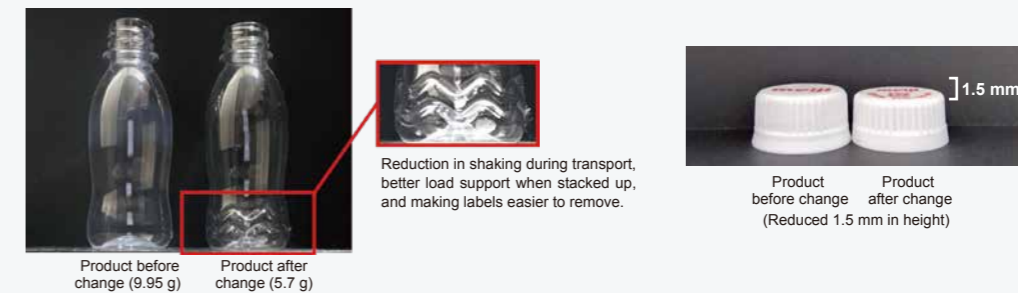


For further details

## Caring for the Earth

### Recycling plastic resources

We set out our goal of reducing usage of new petroleum-derived plastics by half compared to fiscal 2017 by fiscal 2030, and totally eliminating such usage by fiscal 2050. We promote weight reduction of PET bottles used for our products, reuse and recycling of plastic utensils used to store and transport our products, and greater use of biomass plastics derived from organic resources and recycled plastics for product packaging and attached straws.



Products weighing 8.7 g are also manufactured at some factories.

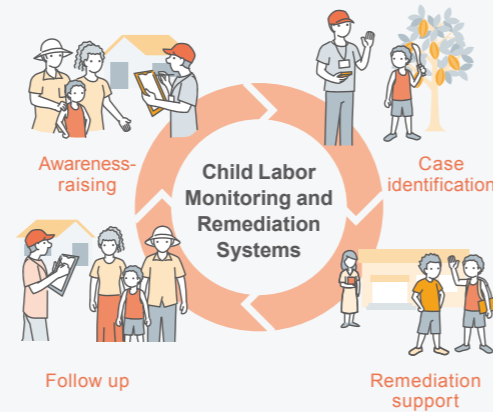
# HUMAN RESOURCES

## Thriving Communities

### Human rights issues in the Republic of Ghana: Measures to abolish child labor

One of the Meiji Group's main suppliers of cocoa is the Republic of Ghana, where child labor is a social issue. The Meiji Group has been introducing Child Labor Monitoring and Remediation Systems (CLMRS\*) for cocoa beans procured from the Republic of Ghana since fiscal 2021. We will continue our efforts to expand the number of farmers visited and alleviate the situation in order to eliminate child labor.

\*CLMRS: Child Labor Monitoring and Remediation Systems



## Sustainable Procurement Activities

### Meiji's unique support program for cocoa farmers: "Meiji Cocoa Support"

We launched our unique support program, "Meiji Cocoa Support," in 2006, and support cocoa farmers in nine countries in Africa, Central and South America, and Asia. We directly visit the cocoa production regions to provide the optimal support required by local farmers, and collaborate with a variety of partners to resolve social issues facing farmers or in the production regions, such as child labor and deforestation. By repeating these activities, we contribute to sustainable cocoa production.



For further details

## Sustainable Procurement Activities

### Support sustainable dairy management Meiji Dairy Advisory

We support "sustainable dairy management" by focusing on human resource management at dairies. Meiji Group's specialist team considers "the farm's ideal (based on its philosophy and goals)" together with the manager, while the farmyard staff discuss and implement "what needs to be done to achieve the goal" and "how to achieve it." For sustainable dairy management, we aim to establish a self-running system that naturally takes root in an "improvement culture;" in other words, becoming accustomed to reviewing the current status and implementing necessary improvements to realize sustainable dairy management. We support the growth of everyone involved in dairy farming.



For further details

We invest proactively in human resources, as the source of value creation, and promote our human resources strategy in conjunction with our management strategy.



For further details

Respecting our employees' diversity and encouraging them to exercise their abilities to the full is critical if the Meiji Group is to achieve sustainable growth. We will strategically promote human capital development to create and deploy Meiji's unique value for wellness globally.

## Diversity, Equity & Inclusion (DE&I)

By mutually supplementing the three approaches of "Creating diversity," "Enhancing diversity," and "Utilizing diversity," we aim to create an environment in which diverse human resources can work vigorously and rewardingly, leading to innovation and the creation of new value.



\*1 In terms of executive officers, management positions, and career positions  
 \*2 Each of Meiji Co., Ltd., Meiji Seika Pharma Co., Ltd., and KM Biologics Co., Ltd. individually  
 \*3 Individuals with at least six months of global experience (studying or living overseas), including foreign personnel



Selected as a Next Nadeshiko: Companies Supporting Dual-career and Co-parenting

## Human Capital Strategy

In order for the Meiji Group to achieve sustainable growth, we have been proactively investing in the development of "professional human resources who will continue to grow and take on challenges while leading the world in food and wellness." We have been reinforcing each employee's knowledge, skills, and abilities, so that their strengths can be fully utilized.



## Health and Productivity Management

We believe that it is important to keep our employees healthy and energized as a company that embodies the Group slogan, Now ideas for Wellness. Based on this belief, we strive to improve productivity by grasping the mental and physical health of employees from a managerial perspective, and strategically investing in maintaining and promoting such health.



Certified as a White 500 in the 2026 Outstanding Organizations of KENKO Investment for Health Program (Large Enterprise Category)  
 Certified as an Outstanding Food Education Practice Organization 2026

## Employee Engagement

In our "2026 Medium-term Business Plan," we defined "employee engagement" as one of the indicators to evaluate improvement in medium- to long-term corporate value. We promote the creation of a corporate culture that supports the realization of each individual's well-being and enables everyone to maximize their own and their team's potential through a perfect union between the company and employees by reinforcing dissemination of our managerial vision, and affording better opportunities for communication at work.



# HISTORY

Over 100-year history of supporting public health

## FOOD

## PHARMACEUTICALS

1916

Tokyo Confectionery Co., Ltd. (Tokyo Confectionery), the predecessor of Meiji Seika, is established.

1917

Kyokuto Condensed Milk Co., Ltd., the predecessor of Meiji Dairies, is established.

1921

Tokyo Confectionery launches the Condensed Milk *Meiji Merry Milk*.

1923

The infant formula Patrogen is created.

1928

Meiji Dairies launches *Meiji Milk*.

1950

Meiji Dairies launches *Meiji Honey Yogurt*.

1951

Meiji Dairies launches Soft Curd *Meiji Infant Formula*.

1971

Meiji Dairies launches Japan's first plain yogurt *Meiji Plain Yogurt*.

1973

Meiji Dairies launches *Meiji Bulgaria Yogurt*.

1992

Meiji Dairies launches *Meiji Hokkaido Tokachi Cheese*.

1994

Meiji Dairies launches the ice cream *Meiji Essel Super Cup Ultra Vanilla*.

1926

Meiji Seika launches *Milk Chocolate*.

1961

Meiji Seika launches *Marble Chocolate*.

1962

Meiji Seika launches *Almond Chocolate*.

1969

Meiji Seika launches the chocolate, *Apollo*.

1975

Meiji Seika launches the chocolate snack, *Kinoko no Yama(Chocorooms)*.

1979

Meiji Seika launches the chocolate snack, *Takenoko no Sato*.

1980

Meiji Seika launches SAVAS, a protein series for athletes.

1988

Meiji Seika launches *Kaju Gummy*.

1946

Pharmaceutical business is started.

1946

The manufacturing of penicillin is started.

1950

The antibiotic *STREPTOMYCIN MEIJI* is launched.

1958

*KANAMYCIN MEIJI*, the first antibiotic of Japanese origin to be accepted in overseas market is launched.

1972

*INFLUENZA HA VACCINE* is launched.

1988

Recombinant adsorbed hepatitis B vaccine *BIMMUGEN* is launched.

1990

Japan's first treatment for Methicillin-resistant *Staphylococcus aureus* (MRSA) infections, the antibiotic *HABEKACIN* is launched.

1994

The antibiotic *MEIACT* is launched.

1996

Meiji Seika launches a new-texture chocolate, *Galbo*.

1998

Meiji Seika launches the high cocoa content chocolate *Chocolate Kouka*.

2002

Meiji Seika launches *Amino Collagen*.

1995

Meiji Dairies launches the sports nutritional beverage *VAAM*.  
Meiji Dairies launches the enteral formula *MeiBalance*.

2000

Meiji Dairies launches *Meiji Probio Yogurt LG21*.

2002

Meiji Dairies launches the drinking milk *Meiji Oishii Gyunyu*.

2007

Meiji Dairies launches the world's first infant formula in cube form *Meiji Hohoemi Raku Raku Cube*.

2009

Meiji Dairies launches *Meiji Yogurt R-1*.

Integration ○ 2009

Meiji Seika and Meiji Dairies integrate their management. Meiji Holdings Co., Ltd., a joint holding company, is established.

Reorganization

2011

The food company Meiji Co., Ltd. begins operation.

2011

The pharmaceutical company Meiji Seika Pharma Co., Ltd. begins operation.

2014

*Meiji The Chocolate* is launched.

2015

The protein drink *SAVAS Milk* is launched.

2017

*Meiji Spreatable* is launched.

2019

The liquid infant formula *Meiji Hohoemi Raku Raku Milk* is launched.

2022

*Meiji Miraful* is launched.  
*Meiji Femni care food α-LunA* is launched.

2025

*Nama no Toki Shittori Milk* is launched.

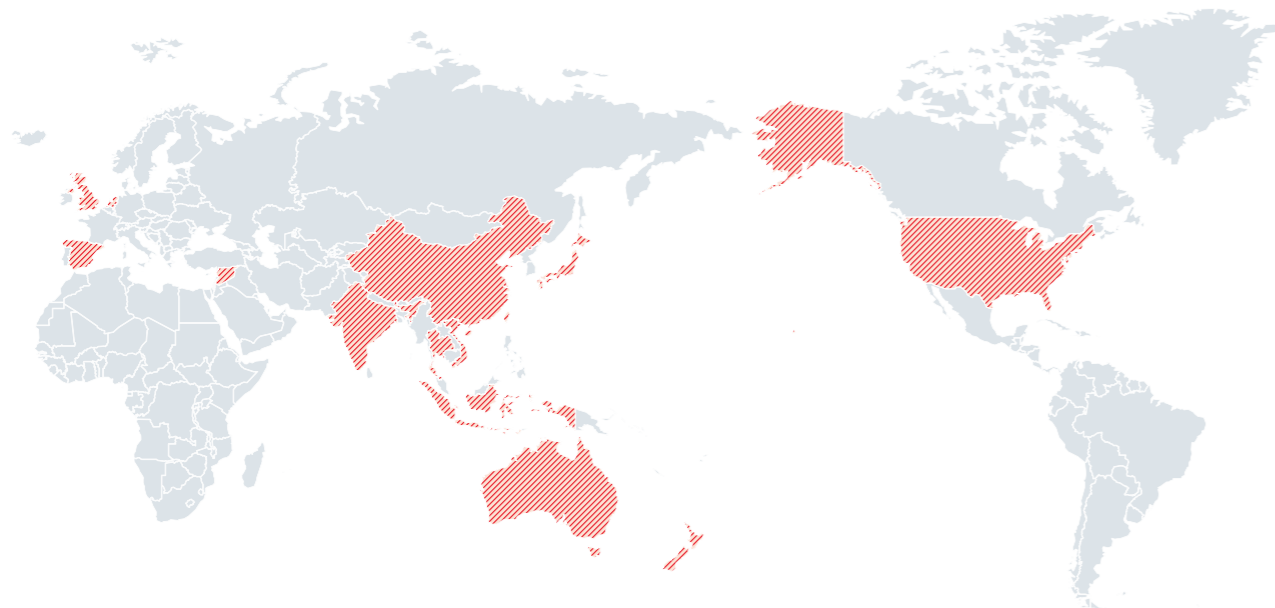
2025

*Meiji Yogurt for Hemoglobin A1c Management* is launched.

○ 2026 110th anniversary of founding

# OUTLINE

Meiji Group's International Operations



## Group Companies' Profile

### ■ Meiji Holdings Co., Ltd.

Established: April 1, 2009  
 President and Representative Director: Katsunari Matsuda  
 Number of Group Employees: 17,103 (As of March 31, 2026)  
 Main Businesses: Management of business operations of subsidiaries manufacturing and selling foods and pharmaceuticals and incidental/related operations  
 Head Office: 2-4-16, Kyobashi, Chuo-ku, Tokyo, Japan

### ■ Meiji Co., Ltd.

Established: December 21, 1917  
 President and Representative Director: Bunjiro Yao  
 Number of Employees: 9,845 (As of March 31, 2026)  
 Main Businesses: Manufacture and sale of milk and dairy products, confectioneries, and other foods  
 Head Office: 2-2-1, Kyobashi, Chuo-ku, Tokyo, Japan

### ■ Meiji Seika Pharma Co., Ltd.

Established: October 9, 1916  
 President and Representative Director: Toshiaki Nagasato  
 Number of Employees: 6,953 (As of March 31, 2026)  
 Main Businesses: Manufacturing and sale of ethical pharmaceuticals  
 Head Office: 2-4-16, Kyobashi, Chuo-ku, Tokyo, Japan

#### Meiji Holdings Co., Ltd.

Research Laboratory ..... 1

#### Food Segment

#### Meiji Co., Ltd.

Research Laboratory ..... 1  
 Plant ..... 24  
 Branch Office ..... 5  
 Domestic Group Company ..... 17  
 Overseas Group Company ..... 17  
 Overseas Business Facility ..... 1

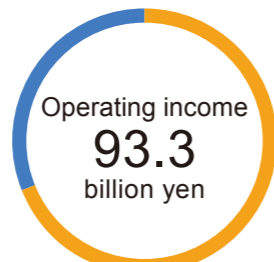
#### Pharmaceuticals Segment

#### Meiji Seika Pharma Co., Ltd.

Research Laboratory ..... 1  
 Plant ..... 2  
 Branch ..... 13  
 Domestic Group Company ..... 7  
 Overseas Group Company ..... 17



■ Food ..... 80% ■ Pharmaceuticals ..... 20%



■ Food ..... 69% ■ Pharmaceuticals ..... 31%  
 (Fiscal year ended March 2026)



### Meiji Group celebrates its 110th anniversary in October 2026.

"!!" used in the commemorative logo expresses new ideas generated from Meiji Group, while "♡" also expresses our contribution to a sustainable society through stakeholder empathy. This logo conveys the future-looking message "Let's enlarge ideas and empathy" starting in our 110th year.

### Wellness Stories



For further details

Meiji Group stories about its consideration and efforts concerning health values for the public and the world

Introducing various measures concerning health values for the public and the world, such as the development of foods that benefit our health; the development of pharmaceuticals to treat infectious, intractable and rare diseases; and the procurement of sustainable raw materials.



### note



For further details (Japanese only)

Official note account of Meiji Holdings Co., Ltd.

Introducing our actions to realize a better future, where all people, society, and the Earth are healthy and sustainable. We also share the dedication and passion our employees bring to our products and businesses.

